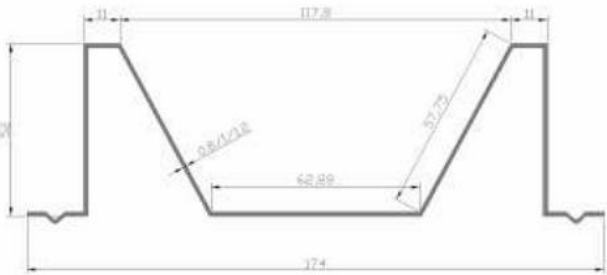


BIPV BRACKETS-M-SHAPED TROUGH

BIPV Bracket System-M Sink



Product parametersPRODUCT PARAMETERS	
Product name: BIPV bracket system-M sink	Product Name: BIPV Brackets-M-shaped Trough
Product material: zinc aluminum magnesium	Product Material: Q235B
Surface treatment: film weight ȳ275g/m2	Surface Treatment: Film Weight:ȳ275g/m2

M type sink



Reinforced bottom keel



Reinforced bottom keel



Lateral sink



Anti-slip aluminum pedals

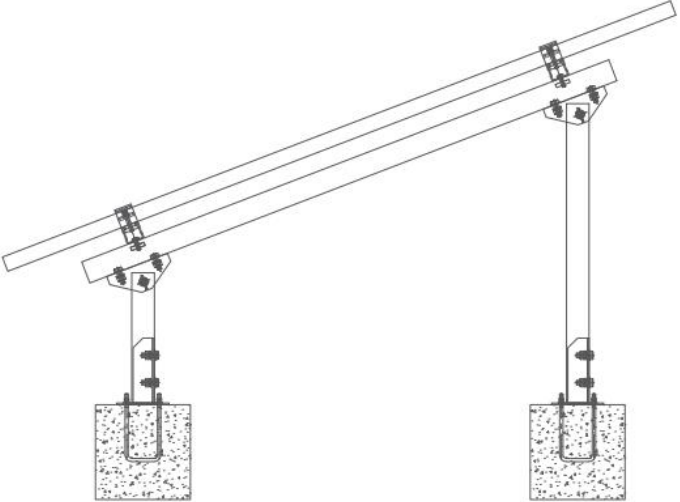
Between the main photovoltaic modules, as a maintenance channel, press the long and wide Customized according to actual needs, height is 35mm/40mm



Aluminum alloy cross arm

CONCRETE FLAT ROOF BRACKETS-HOT GALVANIZED SURFACE TREATMENT

Concrete Flat Roof Mounting System - Hot Dip Galvanized Surface Treatment



Product parametersPRODUCT PARAMETERS	
Product name: Concrete flat roof bracket System-Hot-dip galvanized surface treatment	Product Name: Concrete Flat Roof Brackets-Hot Galvanized Surface Treatment
Product material: Q235B	Product Material: Q235B
Surface treatment: galvanized thickness 65ȳm	Surface Treatment: Galvanized



side pressure

End Clamp Kit



medium pressure

Mid Clamp Kit



Three hole base
Base



Four hole triangle piece

Triangle Connection



Direct connection

Beam Connection

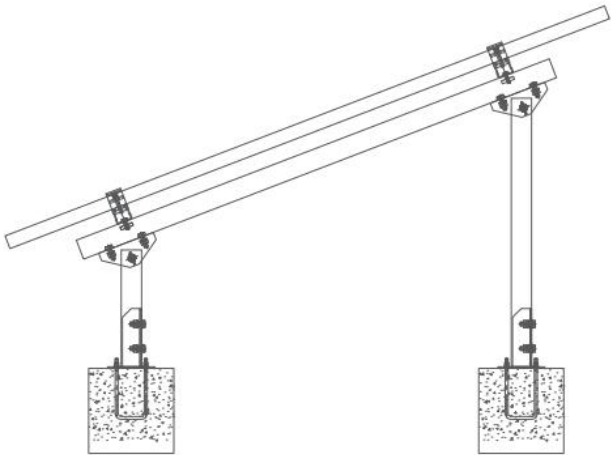


C-shaped steel

C Beam

CONCRETE FLAT ROOF BRACKETS-AZM SURFACE TREATMENT

Concrete flat roof support system-surface galvanized aluminum magnesium treatment



Product parametersPRODUCT PARAMETERS

Product name: Concrete flat roof bracket	Product Name: Concrete Flat Rooe Brackets-AZM Surface Treatment
System-Surface galvanized aluminum magnesium treatment	
Product material: S350	Product Material: S350
Surface treatment: galvanized aluminum magnesium	Surface Treatment: Aluminum Zinc Magnesium

AccessoriesACCESSORIES



side pressure

End Clamp Kit



medium pressure

Mid Clamp Kit

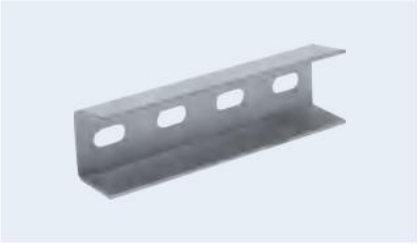


Three hole base
Base



Four hole triangle piece

Triangle Connection



Direct connection

Beam Connection

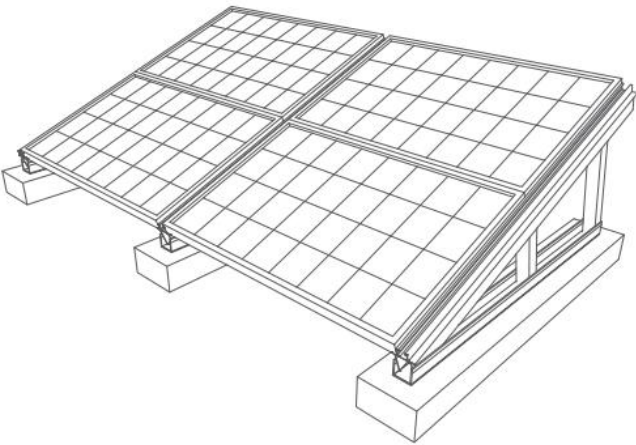


C-shaped steel

C Beam

FLAT ROOF BRACKETS-FRAME TRIANGLE WITH BALLAST

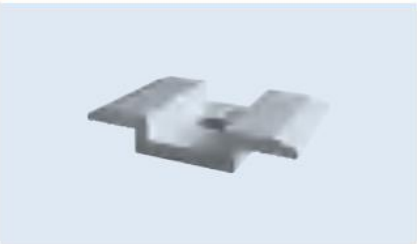
Flat roof support system - edge tripod



Product parametersPRODUCT PARAMETERS

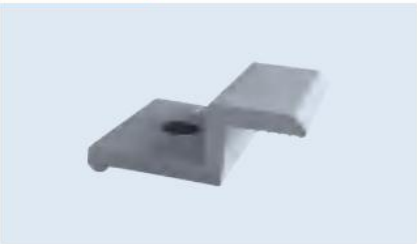
Product name: Flat roof support system-edge tripod	Product Name: Flat Roof Brackets-Frame Triangle With Ballast
Product material: AL6063-T5	Product Material: AL6063-T5
Surface treatment: anodized AA15	Surface Treatment: Anodizing AA15

Detail imageDETAIL IMAGE



medium pressure

Mid Clamp



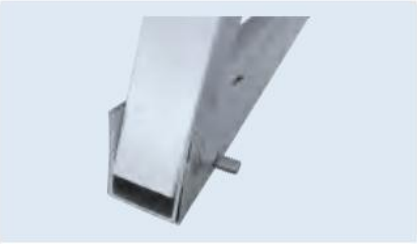
side pressure

End Clamp



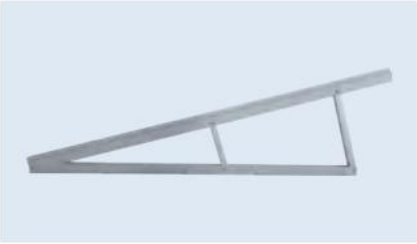
slider

Slider



Column

Column



Edge tripod

Frame Triangle

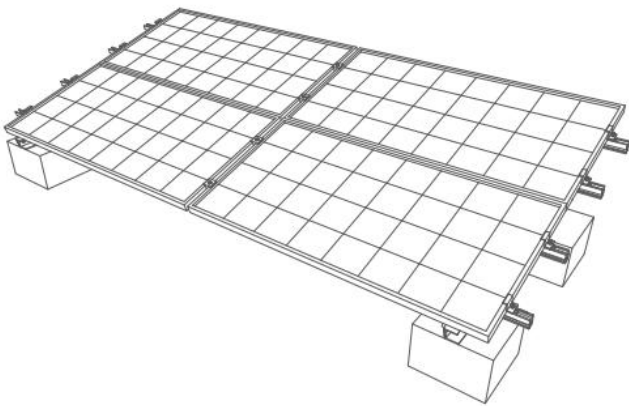


Edge aluminum guide rail

Frame Rail

FLAT ROOF BRACKETS-TRIANGLE SYSTEM ON CONCRETE BLOCK

Flat roof bracket system-angle aluminum tripod



Product parameters
PRODUCT PARAMETERS

Product Name: Flat Roof Bracket System-Angle Aluminum tripod	Product Name: Flat Roof Brackets-Triangle System On Concrete Block
Product material: AL6063-T5	Product Material: AL6063-T5
Surface treatment: anodized AA15	Surface Treatment: Anodizing AA15

Accessories
ACCESSORIES



Slider medium pressure
Mid Clamp with Slider



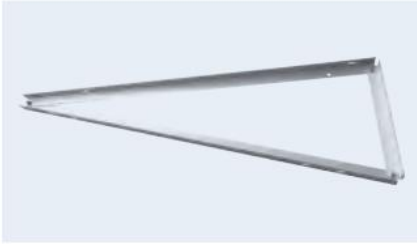
Slider side pressure
End Clamp with Slider



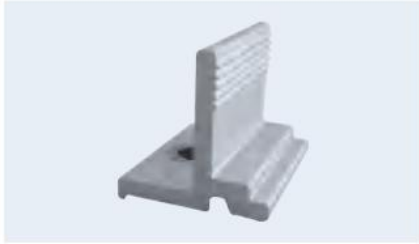
45x28 guide rail
45*28 Rail



Aluminum slider
Slider



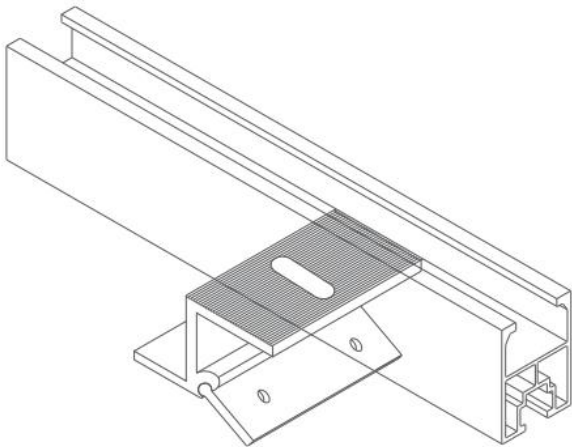
Angle aluminum tripod
Triangle



Guide rail pressing block
Rail Clamping Block

CORRUGATED METAL SHEET BRACKETS

Color steel tile roof bracket system



Product parameters
PRODUCT PARAMETERS

Product name: Color steel tile roof bracket system	Product Name: Corrugated Metal Sheet Brackets
Product material: AL6063-T5	Product Material: AL6063-T5
Surface treatment: anodized AA15	Surface Treatment: Anodizing AA15

Accessories
ACCESSORIES



40*28 aluminum guide rail
40*28 Rail



40*28 direct connection
40*28 Splice



side pressure
Mid Clamp with Slider



Slider medium pressure
Mid Clamp with Slider



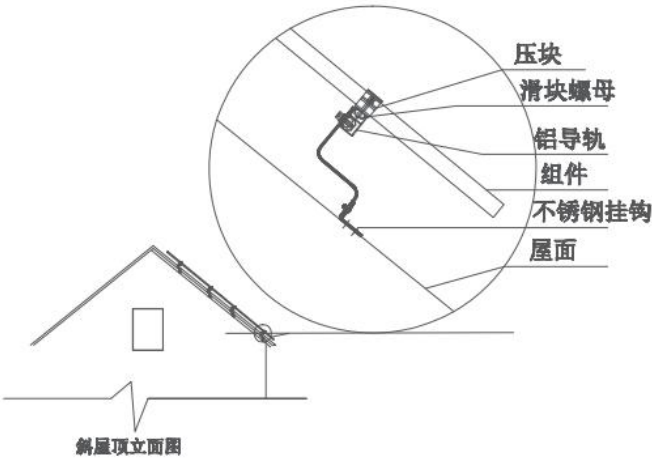
T-bolt
T-bolt



Universal T-shaped clamp
Universal clamp

PITCHED TILE ROOF BRACKETS-HOOK







Pitched Roof Bracket System-Hook



Product parameters
PRODUCT PARAMETERS

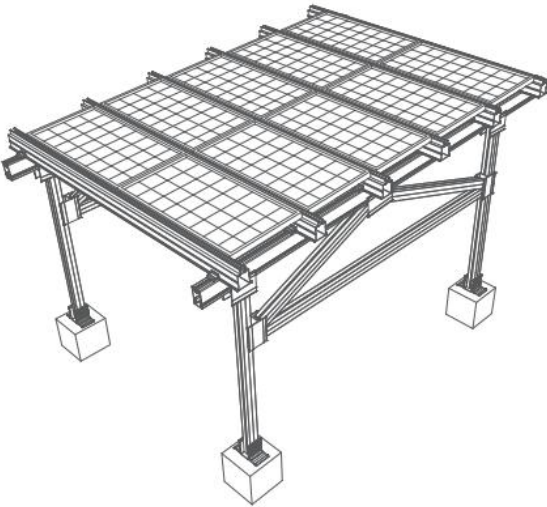
Product Name: Pitched Roof Bracket System-Hook	Product Name: Pitched Tile Roof Brackets
Product material: AL6063-T5	Product Material: AL6063-T5
Surface treatment: anodized AA15	Surface Treatment: Anodizing AA15

Accessories
ACCESSORIES

 45x28 guide rail 45*28 Rail	 45x28 direct connection 45*28 Splice	 Slider side pressure End Clamp with Slider
 Slider medium pressure Mid Clamp with Slider	 Slider bolt set Bolt with Slider	 hook up Hook

SUN ROOM

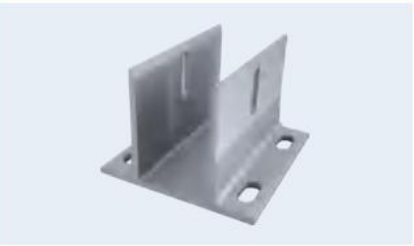
sun room



Product parameters
PRODUCT PARAMETERS

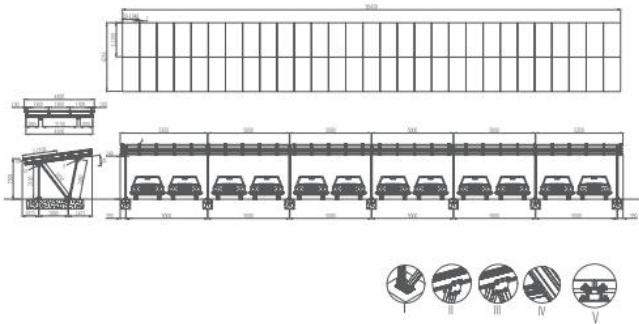
Product name: Sunroom	Product Name: Sun Room
Product material: AL6063-T5	Product Material: AL6063-T5
Surface treatment: anodized AA15	Surface Treatment: Anodizing AA15

Detail image
DETAIL IMAGE

 Base Base	 Column Column	 Guide rail pressing block Rail Clamping Kit
 guide Rail	 Inclined beam Inclined Rail	 Connector Connector

CARPORT BRACKETS

carport bracket system



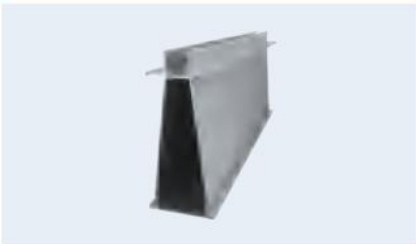
Product parameters

PRODUCT PARAMETERS

Product Name: Carport Bracket System	Product Name: Carport Brackets
Product material: AL6063-T5	Product Material: AL6063-T5
Surface treatment: anodized AA15	Surface Treatment: Anodizing AA15

Accessories

ACCESSORIES



guide
Rail



Connector
Connector



Guide rail pressing block
Rail Clamping Kit



Base
Base



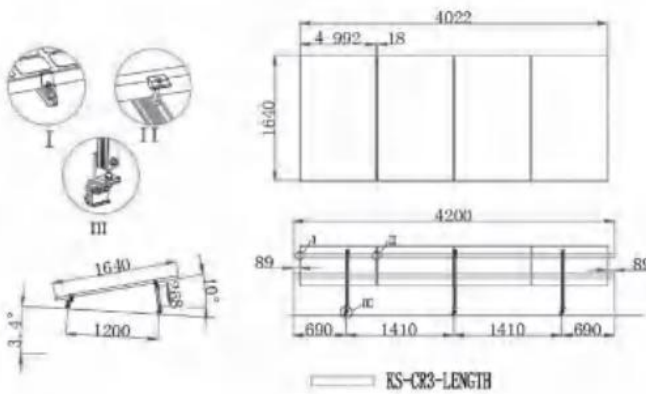
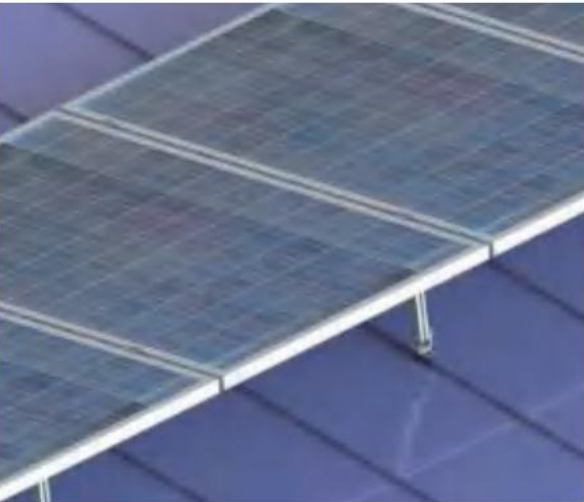
inclined beam
Inclined Rail



Column
Column

CORRUGATED SHEET METAL BRACKETS-REAR COLUMN ADJUSTABLE

Color steel tile roof bracket system-adjustable rear column



Product parameters

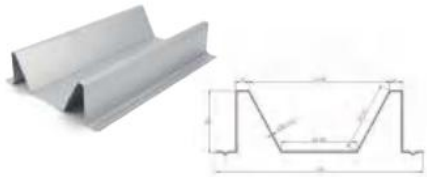
PRODUCT PARAMETERS

Product name: Color steel tile roof bracket system-adjustable rear column	Product Name: Corrugated Sheet Metal Brackets-Rear Column Adjustable
Product material: AL6063-T5	Product Material: AL6063-T5
Surface treatment: anodized AA15	Surface Treatment: Anodizing AA15

Detail image

DETAIL IMAGE





M-SHAPED TROUGH
M type sink

Product Material: Galvanized aluminum
Surface Treatment: Galvanized
Product Size: 185*65mm

product material: Q235B

Surface treatment: zinc aluminum magnesium

Product size: 185*65mm



TROUGH
horizontal sink

Product Material: Galvanized aluminum
Surface Treatment: Galvanized
Product Size: 185*65mm

product material: Q235B

Surface treatment: zinc aluminum magnesium

Product size: 77*19mm



UPPER COVER roof
cover

Product Material: Galvanized aluminum
Surface Treatment: Galvanized
Product Size: 290*3000*35mm

product material: Q235B

Surface treatment: galvanized aluminum plate

Product size: 290*3000*35mm



STAND SEAM RAIL- 001 upright
seaming clamp

Product Material: Aluminum alloy AL6063-T5
Surface Treatment: Anodizing
Product Size: Hexagon socket head cap screws
M8*25*2(stainless steel 304)

product material: Aluminum alloy AL6063-T5

Surface treatment: Anodized AA15

Product Size: 1#L=50*3.8mm



STAND SEAM RAIL- 002 upright
seaming clamp

Product Material: Aluminum alloy AL6063-T5
Surface Treatment: Anodizing
Product Size: Hexagon socket head cap screws
M8*25*2 (stainless steel 304)

material: aluminum alloy AL6063-T5

Surface treatment: Anodized AA15

Product size: 2#L=50*3.8mm



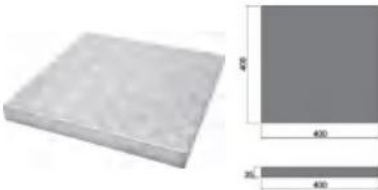
STAND SEAM RAIL- 003 upright
seaming clamp

Product Material: Aluminum alloy AL6063-T5
Surface Treatment: Anodizing
Product Size: Hexagon socket head cap screws
M8*25*2 (stainless steel 304)

material: aluminum alloy AL6063-T5

Surface treatment: anodized AA15

Product size: 3#L=50*3.8mm



ALUMINUM PEDAL
aluminum pedals

Product Material: Galvanized aluminum
Surface Treatment: Anodizing
Product Size: 400*40mm

product material: embossed board

Surface treatment: anodizing

Product size: 400*30/35/40*1.5mm



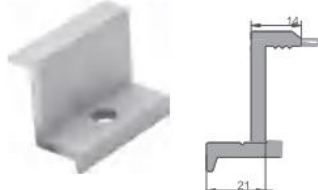
LEVELING PARTS
Leveling parts

Product Material: Q235B
Surface Treatment: Zinc-Aluminum-Magnesium
Product Size: 140*50*3mm

product material: Q235B

Surface treatment: zinc aluminum magnesium

Product size: 140*50*3mm



END CLAMP

side pressure

Product Material: Aluminum alloy AL6063-T5
Surface Treatment: Anodizing
Product Size: 35/40*50mm

product material: Aluminum alloy AL6063-T5

Surface treatment: anodized AA15

Product size: 35/40*50mm



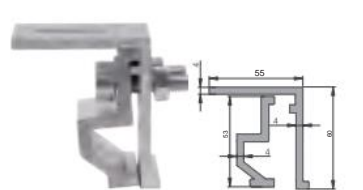
STAND SEAM RAIL- 004 upright
seaming clamp

Product Material: Aluminum alloy AL6063-T5
Surface Treatment: Anodizing
Product Size: Hexagon socket head cap screws
M8*25*2 (stainless steel 304)

material: aluminum alloy AL6063-T5

Surface treatment: anodized AA15

Product size: 4#L=50*3.8mm



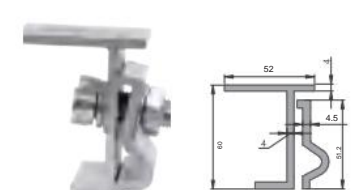
STAND SEAM RAIL- 005 upright
seaming clamp

Product Material: Aluminum alloy AL6063-T5
Surface Treatment: Anodizing
Product Size: Hexagon socket head cap screws
M8*25*2 (stainless steel 304)

material: aluminum alloy AL6063-T5

Surface treatment: anodized AA15

Product size: 5#L=50*3.8mm



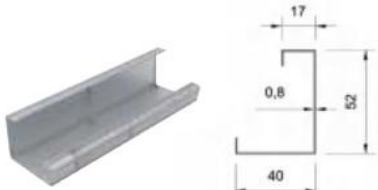
STAND SEAM RAIL- 006 upright
seaming clamp

Product Material: Aluminum alloy AL6063-T5
Surface Treatment: Anodizing
Product Size: Hexagon socket head cap screws
M8*25*2 (stainless steel 304)

material: aluminum alloy AL6063-T5

Surface treatment: anodized AA15

Product size: 6#L=50*3.8mm



UPPER SUPPORT
Support

Product Material: Q235B
Surface Treatment: Zinc-Aluminum-Magnesium
Product Size: 0.8*3500mm

product material: Q235B

Surface treatment: zinc aluminum magnesium

Product size: 0.8*3500mm



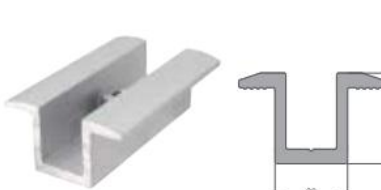
CROSS STRETCHER
cross arm

Product Material: Aluminum alloy AL6063-T5
Surface Treatment: Anodizing
Product Size: 40mm

product material: Aluminum alloy AL6063-T5

Surface treatment: anodized AA15

Product size: 40mm wide



MID CLAMP medium
voltage

Product Material: Aluminum alloy AL6063-T5
Surface Treatment: Anodizing
Product Size: 35/40*50mm

product material: Aluminum alloy AL6063-T5

Surface treatment: Anodized AA15

Product size: 35/40*50mm



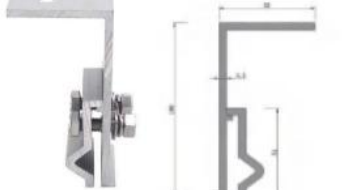
STAND SEAM RAIL- H01
High 1 upright locking clamp

Product Material: Aluminum alloy AL6063-T5
Surface Treatment: Anodizing
Product Size: Hexagon socket head cap screws
M8*25*2 (stainless steel 304)

material: aluminum alloy AL6063-T5

Surface treatment: anodized AA15

Product Size: Height 1L=50*4.5mm



STAND SEAM RAIL- H02
High 2 upright locking clamp

Product Material: Aluminum alloy AL6063-T5
Surface Treatment: Anodizing
Product Size: Hexagon socket head cap screws
M8*25*2 (stainless steel 304)

material: aluminum alloy AL6063-T5

Surface treatment: anodized AA15

Product Size: Height 2L=50*4.5mm



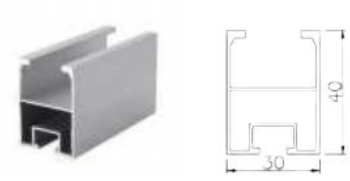
STAND SEAM RAIL- H03
High 3 upright locking clamp

Product Material: Aluminum alloy AL6063-T5
Surface Treatment: Anodizing
Product Size: Hexagon socket head cap screws
M8*25*2 (stainless steel 304)

material: aluminum alloy AL6063-T5

Surface treatment: anodized AA15

Product size: height 3L=50*4.5mm



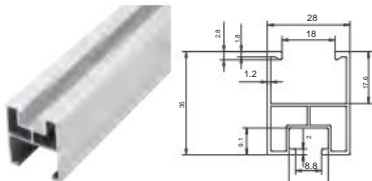
40*30 RAIL 40*30
aluminum alloy guide rail

Product Material: Aluminum alloy AL6063-T5
Surface Treatment: Anodizing
Product Size: 40*30mm

Product material: aluminum alloy AL6063-T5

Surface treatment: Anodized AA15

Product size: 40*30*1.2mm



35*28 RAIL 35*28
aluminum alloy guide rail

Product Material: Aluminum alloy AL6063-T5
Surface Treatment: Anodizing
Product Size: 35*28mm

Product material: aluminum alloy AL6063-T5

Surface treatment: anodized AA15

Product size: 35*28*1.2mm



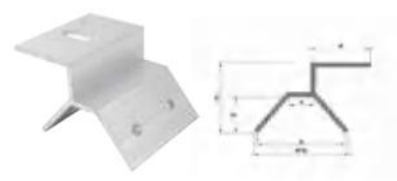
40*30 RAIL-R01 40*30
aluminum alloy guide rail-R01

Product Material: Aluminum alloy AL6063-T5
Surface Treatment: Anodizing
Product Size: 40*30mm

Product material: aluminum alloy AL6063-T5

Surface treatment: anodized AA15

Product size: 40*30*1.2mm



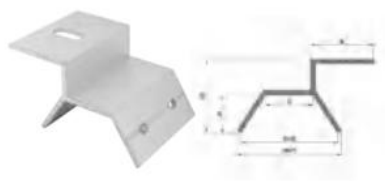
16 WIDTH T CLAMP01 16 wide T-
shaped clamp

Product Material: Aluminum alloy AL6063-T5
Surface Treatment: Anodizing
Product Size: Drill tail wire 6.3*25mm (stainless steel 304) **Product Material:** Aluminum alloy AL6063-T5
Surface treatment: anodized AA15
Product size: 16 width L=60*3.5mm



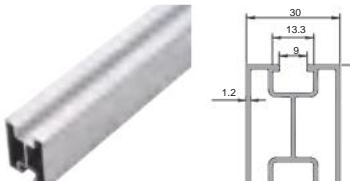
22 WIDTH T CLAMP 22 wide T
clamp

Product Material: Aluminum alloy AL6063-T5
Surface Treatment: Anodizing
Product Size: Drill tail wire 6.3*25mm (stainless steel 304) **Product Material:** Aluminum alloy AL6063-T5
Surface treatment: anodized AA15
Product size: 22 width L=60*3.5mm



30 WIDTH T CLAMP 30 wide T-
shaped clamp

Product Material: Aluminum alloy AL6063-T5
Surface Treatment: Anodizing
Product Size: Drill tail wire 6.3*25mm (stainless steel 304) **Product Material:** Aluminum alloy AL6063-T5
Surface treatment: anodized AA15
Product size: 30 width L=60*3.5mm



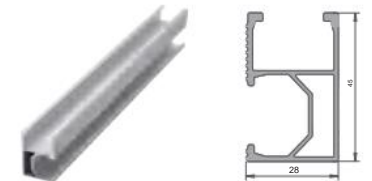
40*30 RAIL-R02 40*30
aluminum alloy guide rail-R02

Product Material: Aluminum alloy AL6063-T5
Surface Treatment: Anodizing
Product Size: 40*30mm

Product material: aluminum alloy AL6063-T5

Surface treatment: anodized AA15

Product size: 40*30*1.2mm



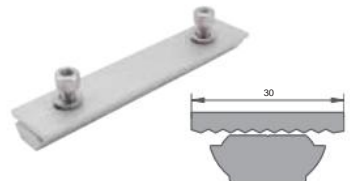
45*28 RAIL 45*28
aluminum alloy guide rail

Product Material: Aluminum alloy AL6063-T5
Surface Treatment: Anodizing
Product Size: 45*28mm

Product material: aluminum alloy AL6063-T5

Surface treatment: anodized AA15

Product size: 45*28*1.2mm



45*28 SPLICE 48*28
guide rail direct connection

Product Material: Aluminum alloy AL6063-T5
Surface Treatment: Anodizing
Product Size: 45*28mm

Product material: aluminum alloy AL6063-T5

Surface treatment: anodized AA15

Product size: 45*28*mm



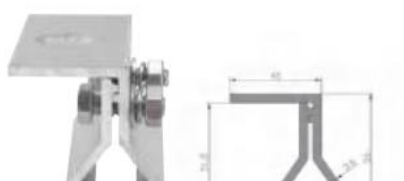
UNIVERSAL T CLAMP Universal
T-type clamp

Product Material: Aluminum alloy AL6063-T5
Surface Treatment: Anodizing
Product Size: Adjustable angle 105°~135°

Product material: aluminum alloy AL6063-T5

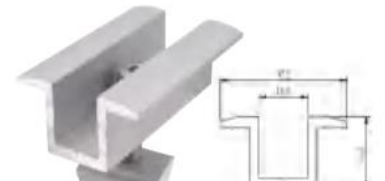
Surface treatment: anodized AA15

Product size: L=60*4.0mm



CLAPM WITHOUT DRILLING

Product Material: Aluminum alloy AL6063-T5
Surface Treatment: Anodizing
Product Size: Hexagon socket head cap screws M8*25*2 (stainless steel 304) **product material:** aluminum alloy AL6063-T5
Surface treatment: anodized AA15
Product size: L=50*3.8mm



MID CLAMP WITH SLIDER

Product Material: Aluminum alloy AL6063-T5
Surface Treatment: Anodizing
Product Size: 35*60*3mm

Product material: Aluminum alloy AL6063-T5

Surface treatment: Anodized AA15

Product Size: 35*60*3mm



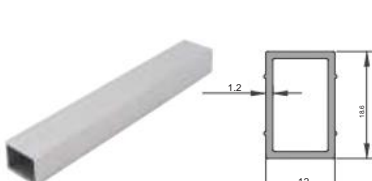
RAIL CONNECTION TUBE-T01
Aluminum alloy direct connection

Product Material: Aluminum alloy AL6063-T5
Surface Treatment: Anodizing
Product Size: 40*30mm

Product material: aluminum alloy AL6063-T5

Surface treatment: anodized AA15

Product size: 40*30mm



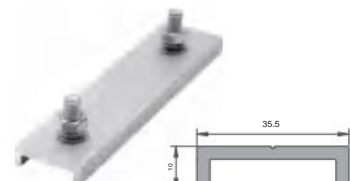
RAIL CONNECTION TUBE-T02 aluminum alloy
direct connection

Product Material: Aluminum alloy AL6063-T5
Surface Treatment: Anodizing
Product Size: 40*30mm

Product material: aluminum alloy AL6063-T5

Surface treatment: anodized AA15

Product size: 40*30mm



35*28 SPLICE 35*28
guide rail direct connection

Product Material: Aluminum alloy AL6063-T5
Surface Treatment: Anodizing
Product Size: 35*28mm

Product material: aluminum alloy AL6063-T5

Surface treatment: anodized AA15

Product size: 35*28mm



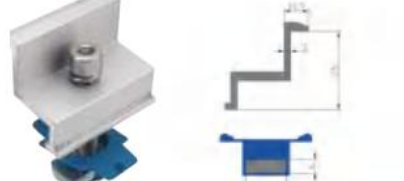
END CLAMP WITH SLIDER

Product Material: Aluminum alloy AL6063-T5
Surface Treatment: Anodizing
Product Size: 35*60*3mm

Product material: aluminum alloy AL6063-T5

Surface treatment: Anodized AA15

Product size: 35*60*3mm



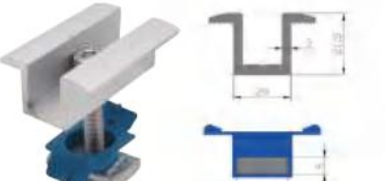
END CLAMP KIT

Product Material: Aluminum alloy AL6063-T5
Surface Treatment: Anodizing
Product Size: 35*60*3mm

Product material: aluminum alloy AL6063-T5

Surface treatment: anodized AA15

Product size: 35*60*3mm



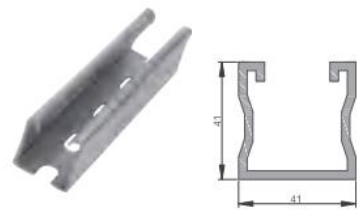
MID CLAMP KIT

Product Material: Aluminum alloy AL6063-T5
Surface Treatment: Anodizing
Product Size: 35*60*3mm

product material: Aluminum alloy AL6063-T5

Surface treatment: anodized AA15

Product size: 35*60*3mm



41*41 C BEAM-HDG
SURFACE TREATMENT

41*41 hot-dip galvanized C-shaped steel

Product Material: Q235B

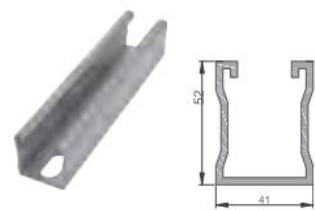
Surface Treatment: Hot-dip Galvanized

Product Size: 41*41*2.0mm

product material: Q235B

Surface treatment: hot dip galvanized

Product Size: 41*41*2.0mm



41*52 C BEAM-HDG
SURFACE TREATMENT

41*52 hot-dip galvanized C-shaped steel

Product Material: Q235B

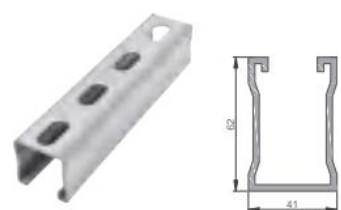
Surface Treatment: Hot-dip Galvanized

Product Size: 41*52*2.0mm

product material: Q235B

Surface treatment: hot dip galvanized

Product Size: 41*52*2.0mm



41*62 C BEAM-HDG
SURFACE TREATMENT

41*62 hot-dip galvanized C-shaped steel

Product Material: Q235B

Surface Treatment: Hot-dip Galvanized

Product Size: 41*62*2.0mm

product material: Q235B

Surface treatment: hot dip galvanized

Product Size: 41*62*2.0mm

Height Adjustable 50-80mm
高度可调节 50-80mm



ADJUSTABLE HOOK-A01

hook up

Product Material: Stainless steel 304

Surface Treatment: NATURE

Product Size: Base 180*50*175mm

product material: Stainless steel 304

Surface treatment: true color

Product Size: Base 180*50*175mm

Height Adjustable 50-80mm
高度可调节 50-80mm



ADJUSTABLE HOOK-A02

hook up

Product Material: Stainless steel 304

Surface Treatment: NATURE

Product Size: Base 180*50*175mm

product material: Stainless steel 304

Surface treatment: true color

Product Size: Base 180*50*175mm

Height Adjustable 50-80mm
高度可调节 50-80mm



ADJUSTABLE HOOK-A03

hook up

Product Material: Stainless steel 304

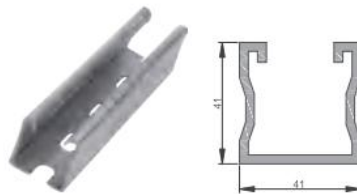
Surface Treatment: NATURE

Product Size: Base 350*50*175mm

product material: Stainless steel 304

Surface treatment: true color

Product Size: Base 350*50*175mm



41*41 C BEAM-ZAM
SURFACE TREATMENT

41*41 zinc aluminum magnesium C-shaped steel

Product Material: Q235B

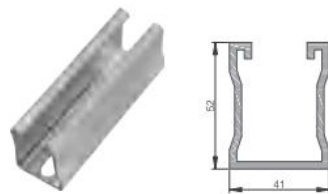
Surface Treatment: Zinc-Aluminum-Magnesium

Product Size: 41*41*2.0mm

product material: Q235B zinc

Surface treatment: aluminum magnesium

Product Size: 41*41*2.0mm



41*52 C BEAM-ZAM
SURFACE TREATMENT

41*52 zinc aluminum magnesium C-shaped steel

Product Material: Q235B

Surface Treatment: Zinc-Aluminum-Magnesium

Product Size: 41*52*2.0mm

product material: Q235B

Surface treatment: zinc aluminum magnesium

Product Size: 41*52*2.0mm



41*62 C BEAM-ZAM
SURFACE TREATMENT

41*62 zinc aluminum magnesium C-shaped steel

Product Material: Q235B

Surface Treatment: Zinc-Aluminum-Magnesium

Product Size: 41*62*2.0mm

product material: Q235B

Surface treatment: zinc aluminum magnesium

Product Size: 41*62*2.0mm



GROUNDING CLIP conductive
sheet

Product Material: Stainless steel 304

Surface Treatment: NATURE

Product Size: Base 41*51*3mm

product material: Stainless steel 304

Surface treatment: true color

Product Size: 41*51*3mm



BIPV GROUNDING CLIP
BIPV conductive sheet

Product Material: Stainless steel 304

Surface Treatment: NATURE

Product Size: Base 35*51*3mm

product material: Stainless steel 304

Surface treatment: true color

Product Size: 35*51*3mm



GROUNDING CLIP
Conductive sheet

Product Material: Stainless steel 304

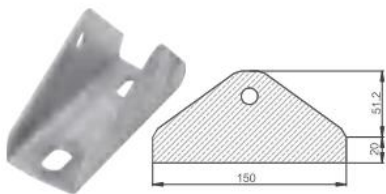
Surface Treatment: NATURE

Product Size: Base 31*51*3mm

product material: Stainless steel 304

Surface treatment: true color

Product Size: 31*51*3mm



TRIANGLE CONNECTION triangle
connector

Product Material: Q235B

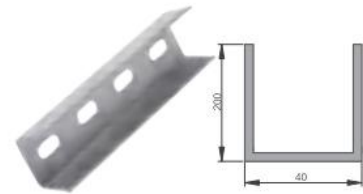
Surface Treatment: HDG/ZAM

Product Size: 150*50*60mm

product material: Q235B

surface treatment: hot dip galvanized

Product Size: 150*50*60mm



BEAM CONNECTION

Direct connection

Product Material: Q235B

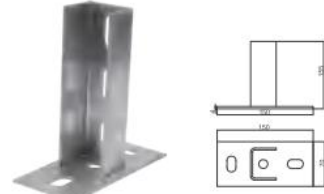
Surface Treatment: HDG/ZAM

Product Size: 40*200mm

product material: Q235B

surface treatment: hot dip galvanized

Product Size: 40*200mm



BASE-HDG SURFACE TREATMENT

Three hole base

Product Material: Q235B

Surface Treatment: Hot-dip Galvanized

Product Size: 150*70*155mm

product material: Q235B

Surface treatment: hot dip galvanized

Product Size: 150*70*155mm



GLASS GRILLE
glass panel grille

Product Material: Glass Fiber

Surface Treatment:

Product Size:

product material: glass fiber

Surface treatment:

Product Size: 38*38*25mm/30mm/38mm



WATER GUIDE

Water guide buckle

Product Material:

Surface Treatment:

Product Size:

product material:

Surface treatment:

Product Size:



HANGER BOLT WITH L-FEET

Double head nut combination

Product Material:

Surface Treatment:

Product Size: M10*150mm

product material:

Surface treatment:

Product Size: M10*150(stainless steel 304)

INTERUSE MONOLITHIC BRACKETS monolithic brackets



BALCONY BRACKETS SYSTEM balcony
bracket system



Case display

