



# How to configure the Micro-Inverter on a WiFi network and register to use the app



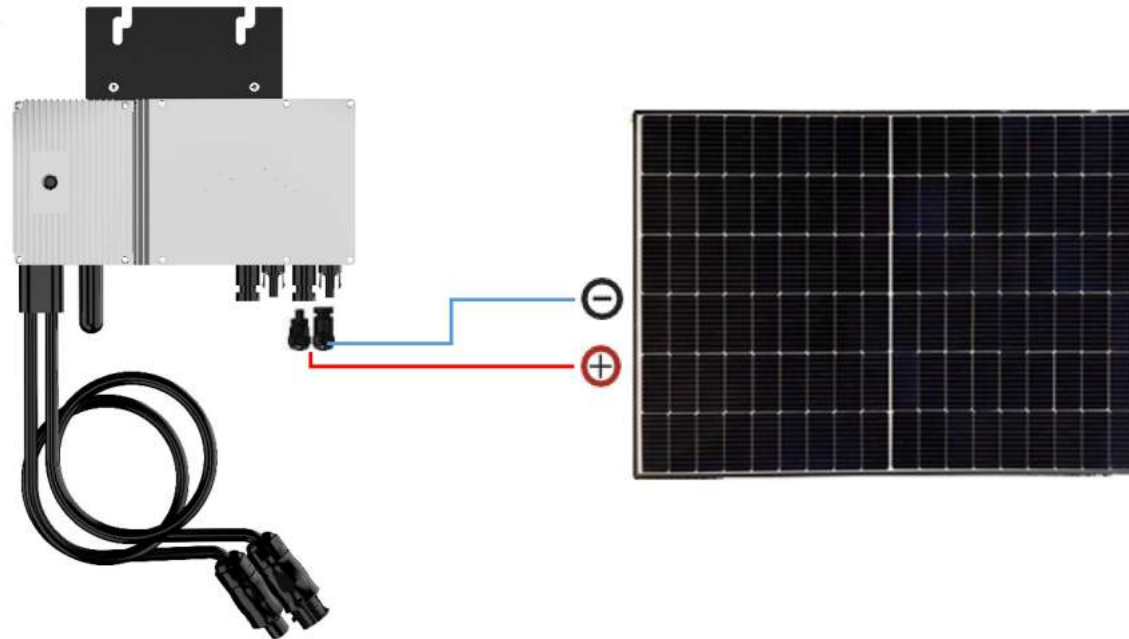
This instruction for AU-1P300/400/600/800/1000/1600/2000 only



## Inverter grid connection settings

1. Make sure the wifi plug is on  
Connect DC source\* (PV input or DC power station)

Make sure the **AC output** is **disconnected**



\*DC source can be a PV panel at day time, LED light flashes every 1 second

## 2. Click on wifi configuration

email

password

Submit

Register   Forgot Password

WiFi Configuration



08:41   85%

<

**Setup WiFi connection**

Setup Wifi connection for following devices

- AU-WiFi inverters
- BDH-WiFi hybrid inverters
- BDS-WiFi storage modules
- BDNZ-WiFi smart meters

**Convert AU-1P8002G to AU-1P6002G**

Only for AU-1P8002G, sn starts with **0x33C**. Convert between AU-1P8002G and AU-1P6002G mode

This function is for meeting regulation requirement for balcony solar in some area

## 3. Click on setup WIFI connection, and select your home WIFI name and enter your password

08:41

Setup WiFi connection

Setup WiFi connection for following devices

- AU-WiFi inverters
- BDH-WiFi hybrid inverters
- BDS-WiFi storage modules
- BDNZ-WiFi smart meters

Convert AU-1P8002G to AU-1P6002G

Only for AU-1P8002G, sn starts with 0x35C. Convert between AU-1P8002G and AU-1P6002G mode

This function is for meeting regulation requirement for balcony solar in some area

08:48

Select WiFi

AU-WiFi only supports 2.4GHz WiFi.

WiFi Name

Enter wifi password

Auto cannot obtain your WiFi password according to Android safety regulation. Please input your HOME WiFi password manually.

Next

08:55

Select WiFi

AU-WiFi only supports 2.4GHz WiFi.

WiFi Name

Enter wifi password

Auto cannot obtain your WiFi password according to Android safety regulation. Please input your HOME WiFi password manually.

Select WiFi Network

WiFi Networks that can be used to add devices (2.4GHz)

osda-fenxuan
new_osda
aWiFi-k73s
osda123
ChinaNet-k6ty

Go to system settings to select a WiFi network.

Next

08:58

Select WiFi

AU-WiFi only supports 2.4GHz WiFi.

new\_osda

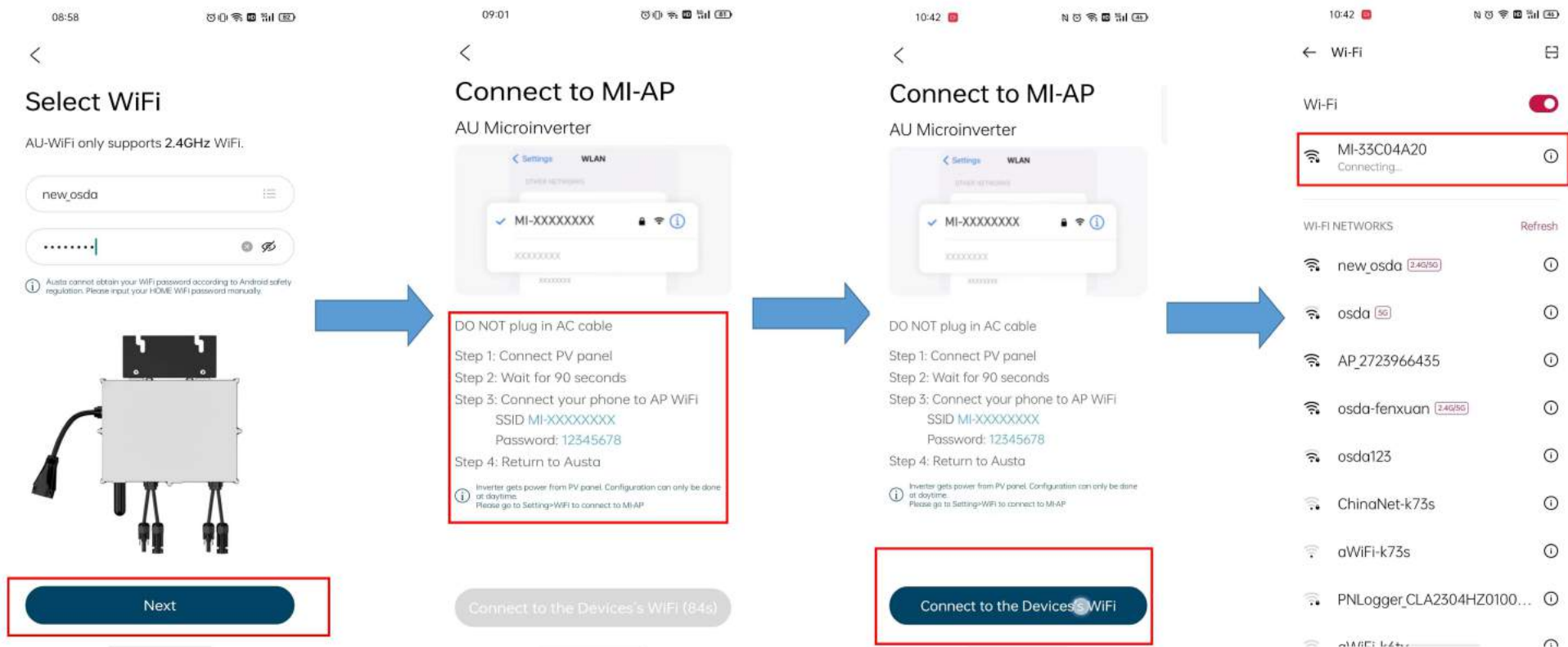
Enter wifi password

Auto cannot obtain your WiFi password according to Android safety regulation. Please input your HOME WiFi password manually.

Next

This is where you enter **your home WIFI and WIFI password**. Note that only **2.4Ghz** is currently supported, not 5Ghz.

4. Click 'Next' and wait 90s, Click Next and wait 90s and continue with the operation to connect MI-XXXXXXXXXX.



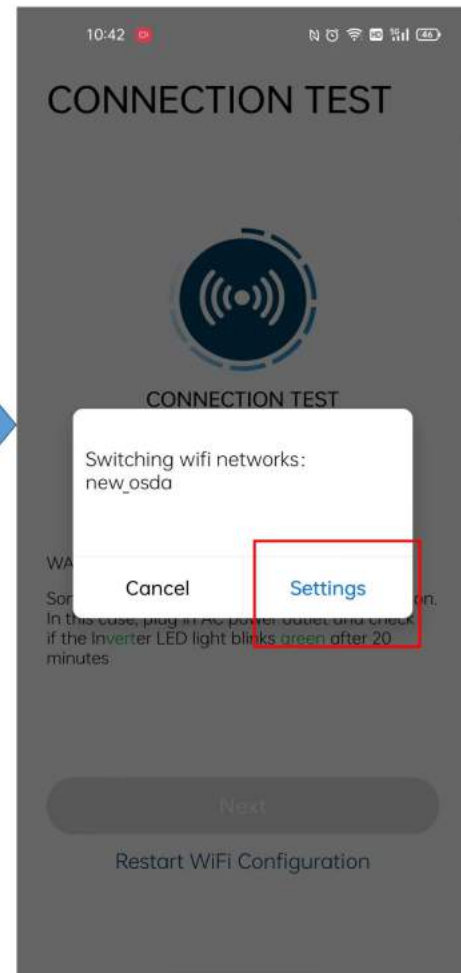
5. Return to this screen and click the blue button again. Go to the connection test screen, click on the middle WIFI button, select a setting.



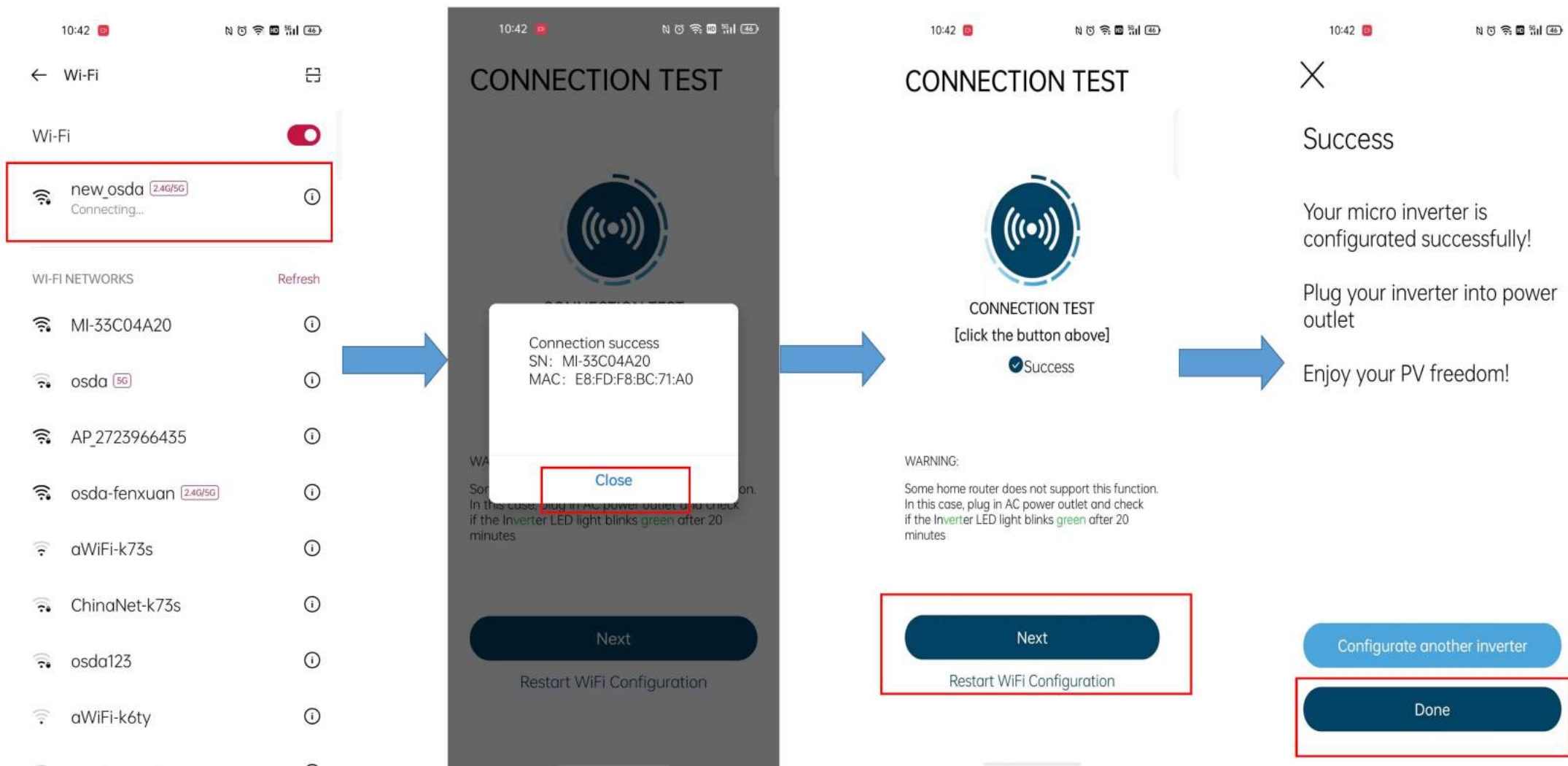
DO NOT plug in AC cable

- Step 1: Connect PV panel
- Step 2: Wait for 90 seconds
- Step 3: Connect your phone to AP WiFi  
SSID MI-XXXXXXX  
Password: 12345678
- Step 4: Return to Austa

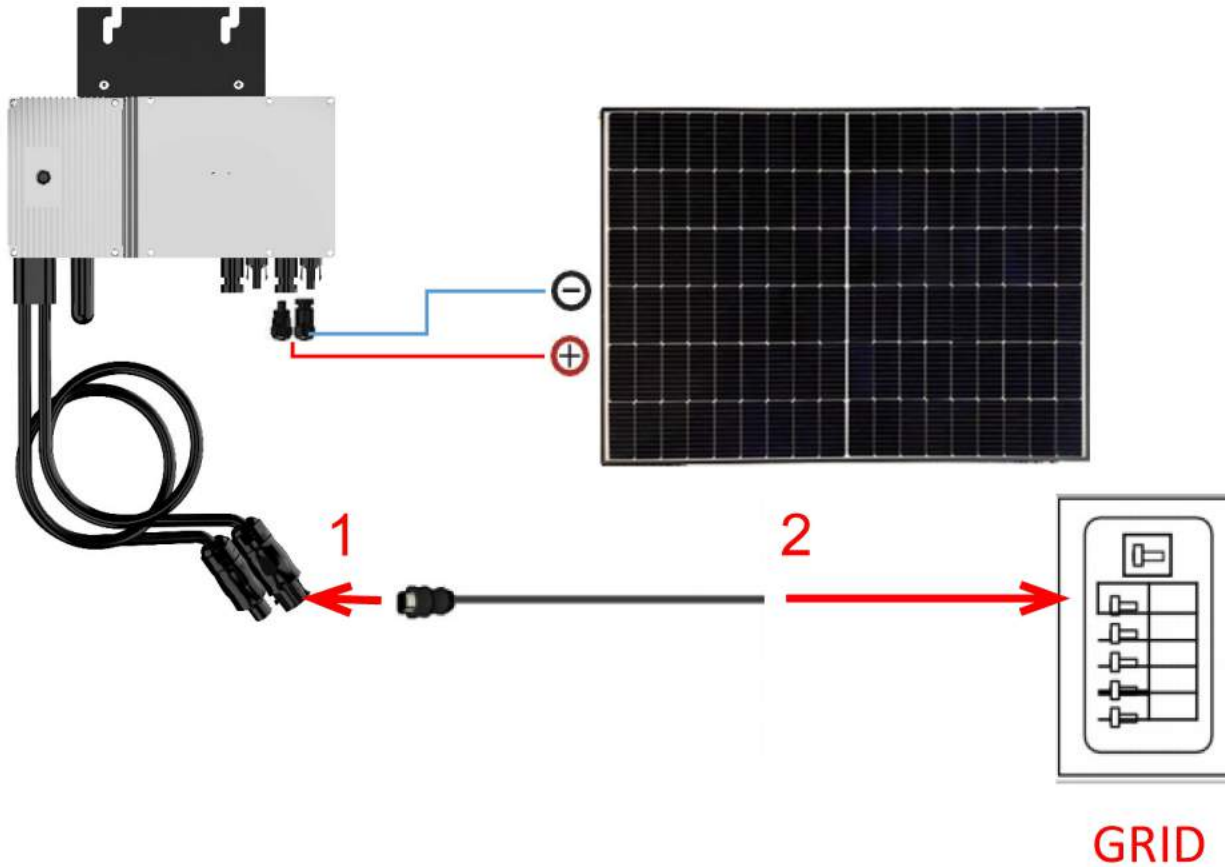
Inverter gets power from PV panel. Configuration can only be done at daytime. Please go to Setting>WiFi to connect to MI-AP



5. Select your home WIFI again, click next when it shows success, and finish setting up.

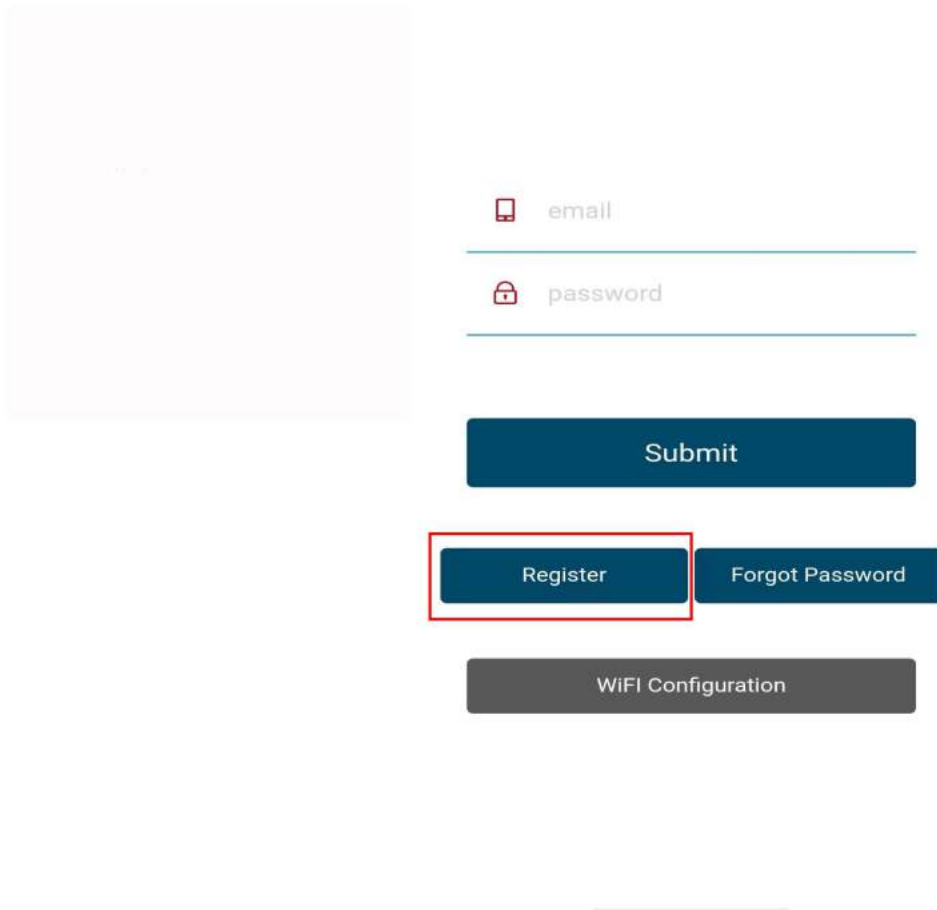


6. Connect **AC(Grid)**, after LED flashes **GREEN** every 3 secs, then configuration is done.





## APP REGISTRATION



A mobile app registration screen with a light blue background. It features a 'Submit' button in dark blue. Below it are two buttons: 'Register' and 'Forgot Password', both in dark blue with white text. The 'Register' button is highlighted with a red border. At the bottom is a grey button labeled 'WIFI Configuration'. On the left, there is a faint, semi-transparent version of the registration form.

email

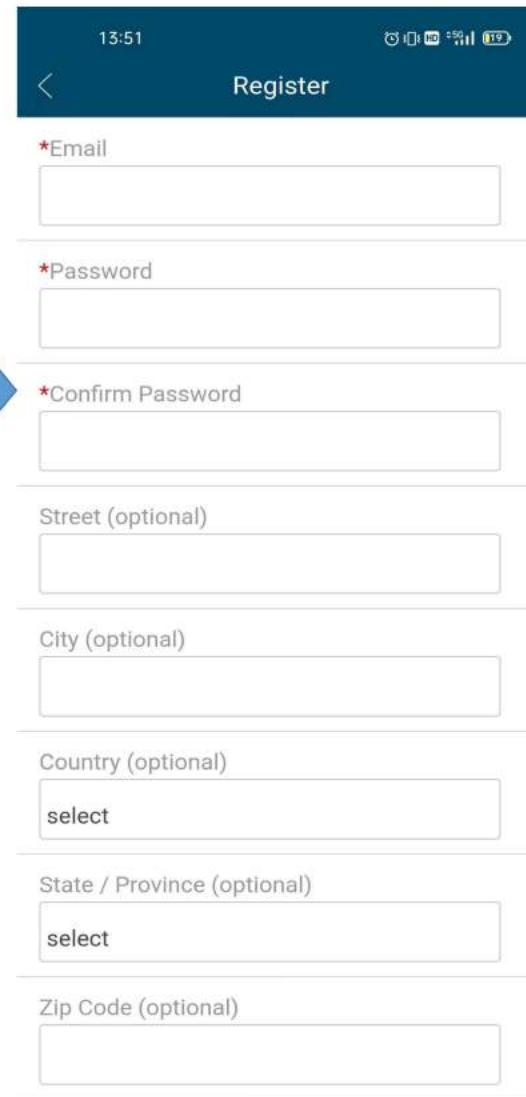
password

Submit

Register

Forgot Password

WIFI Configuration



A mobile app registration form titled 'Register' in a dark blue header. The form contains several input fields: '\*Email', '\*Password', '\*Confirm Password', 'Street (optional)', 'City (optional)', 'Country (optional)' (with a 'select' dropdown), 'State / Province (optional)' (with a 'select' dropdown), and 'Zip Code (optional)'. The asterisk indicates required fields.

13:51

Register

\*Email

\*Password

\*Confirm Password

Street (optional)

City (optional)

Country (optional)

select

State / Province (optional)

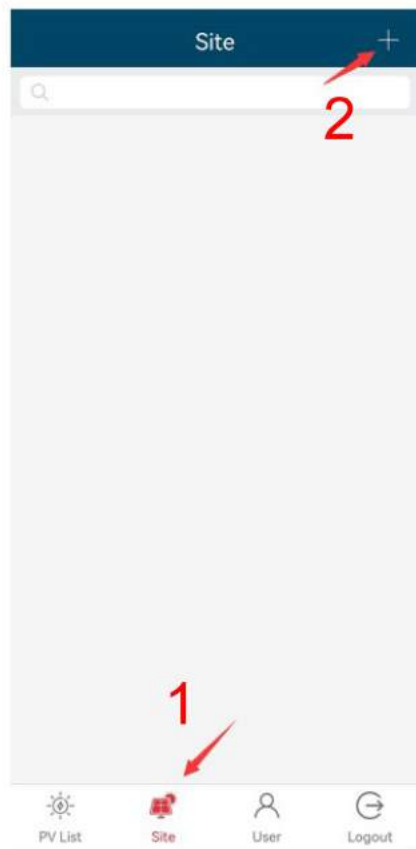
select

Zip Code (optional)

1. Use APP, and register your ID with your available information  
Note that '\*' is a required field



## 2.ADD INVERTER



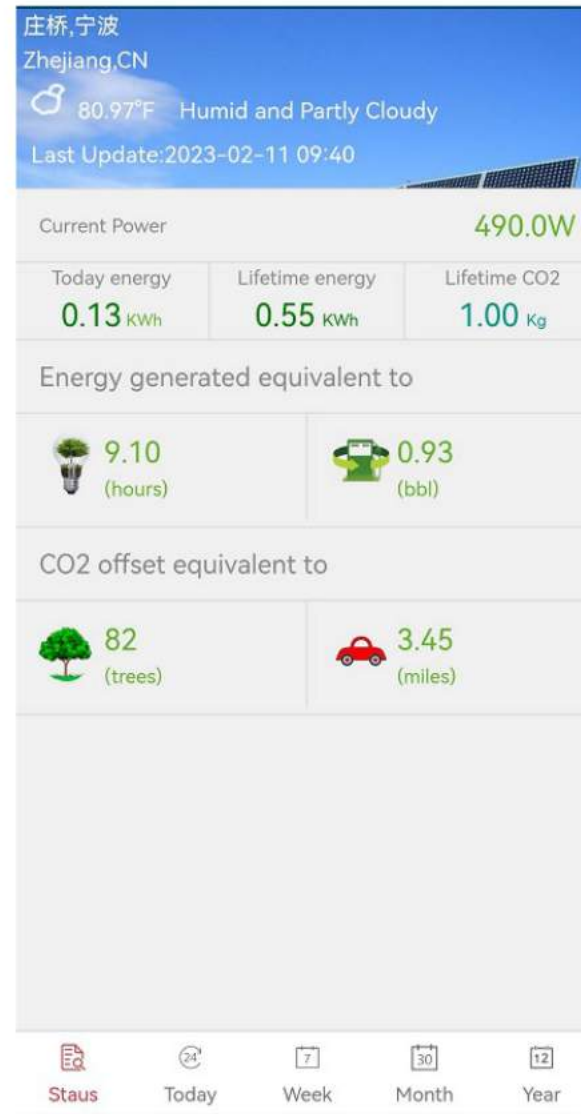
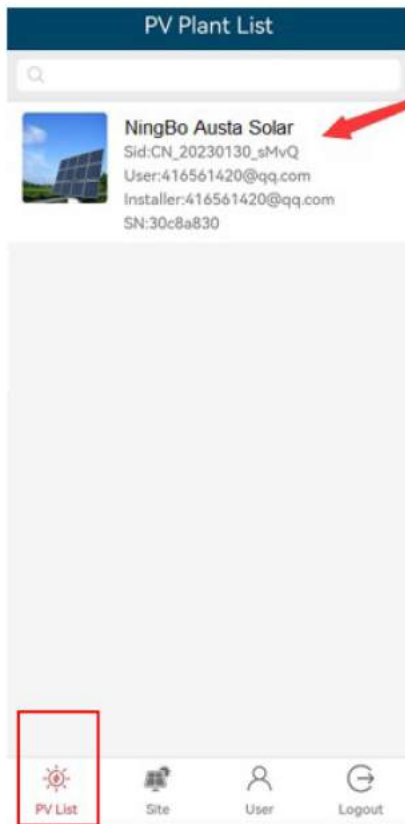
Select **Site** and press **+** to add inverter

Input correct information accordingly  
Note that '\*' is a required field



Inverter adding successful

## UI EXAMPLE



Press the inverter list, you can check **Status** for each inverters