



BORDEN SUNTCN HYBRID INVERTER SERIES ALBUM

—
Sustain the Earth Beyond the Sun

Ningbo Amlife&Borden Electric Co., Ltd ▶



Web: www.bordensuntecn.com

Email: service@bordensuntecn.com

Address: No. 24 Fangshan Road Qiaotouhu Industrial Zone Ninghai County,
Ningbo, Zhejiang, China

Mobile: +86 13777299778

2023

01 ABOUT US

- COMPANY PROFILE
 - INNOVATIVE R&D ADVANTAGES AND GLOBALIZATION
 - BORDEN SUNTCN CAPACITY
 - WORLD-CLASS COMPONENTS SUPPLIERS
-

02 SOLUTIONS

- HYBRID STORAGE SOLUTION
 - WIND POWER SOLUTION
 - SMART MONITORING SYSTEM
-

03 BORDEN SUNTECN INVERTER SERIES AND DATA SHEETS

- CORE TECHNOLOGY
- EUCA SERIES — HYBRID INVERTER
- SUNT SERIES □ SOLAR POWER GRID-TIE INVERTER
- TURBO SERIES — WIND POWER & WATER ENERGY INVERTER

01 ABOUT US

If you want to find the secrets of the universe, think in terms of energy, frequency and vibration More.

BORDEN SUNTCN COMPANY PROFILE

*Borden suntcn is an innovative
and forward-thinking solar company*

Company Profile

Borden Suntcn is an innovative and forward-thinking solar company specializing in the development and production of PV hybrid inverters and energy storage systems. With the commitment to sustain our Earth beyond the sun, Borden Suntcn offers a myriad of hybrid energy solutions that are mostly employed in residential, commercial, and utility-scale systems.

Borden Suntcn strived for never-ending technological innovations-with an internal R&D staff of over 35 prople,Borden Suntcn is able to offer the most up-to-date products that empower a sustainable futeure, all the while providing top of the line quality and service.

As we work toward our vision for sustaining our Earth beyond the sun, we never lose sight of the four commitments that have guided us from the beginning: innovation, quality, sustainability and responsibility.

Ebergy evolved At Borden Suntcn,
we think different.

R&D advantages



18% revenue in
R&D investment



2 R&D Centers



35 R&D Staff Approx

Latest products

Borden Suntcn can provide the latest products to enable a sustainable future

Quality and service

All the while providing top of the line quality and service

01

Innovation and foresight

02

PV hybrid inverter and
energy storage system

03

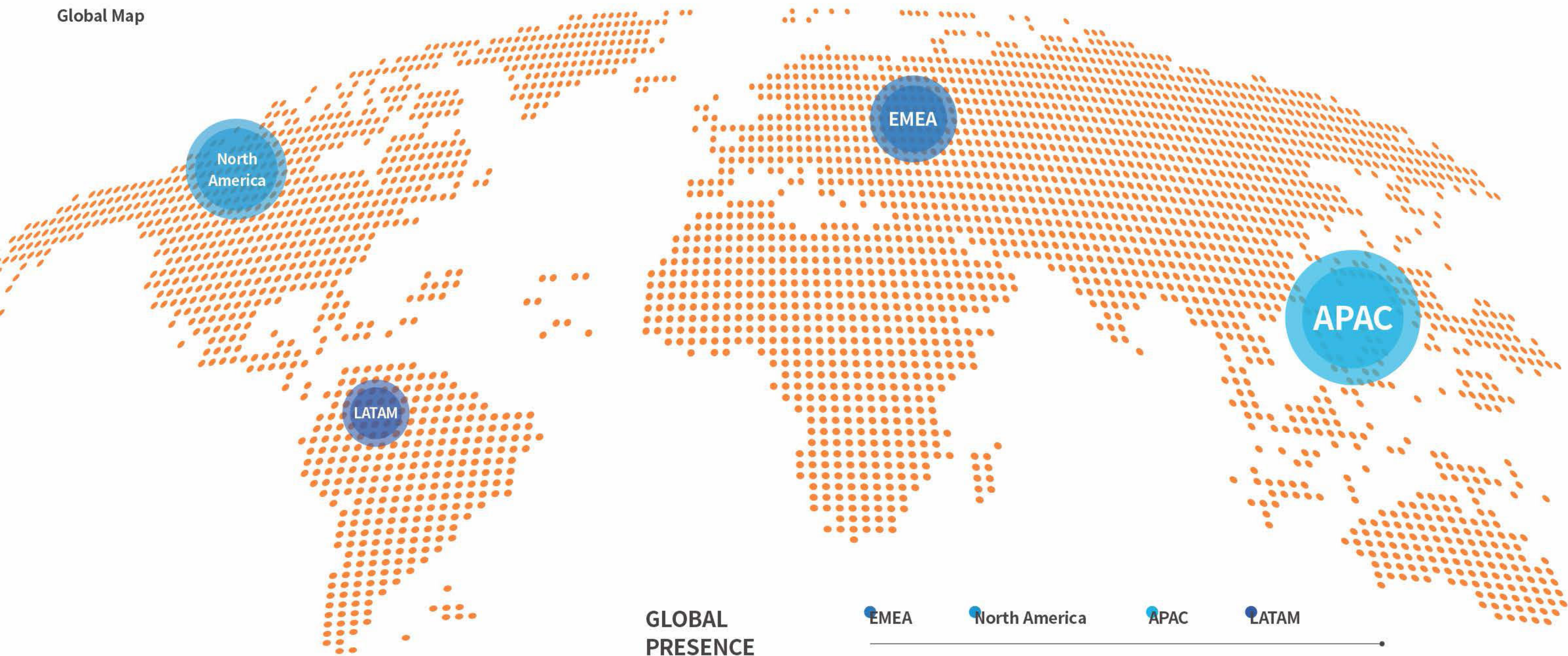
Systems primarily for residential,
commercial and utility scale

Borden suntcn

INNOVATIVE R&D ADVANTAGES AND GLOBALIZATION

4
Location of four continents
in the world

—
Global Map

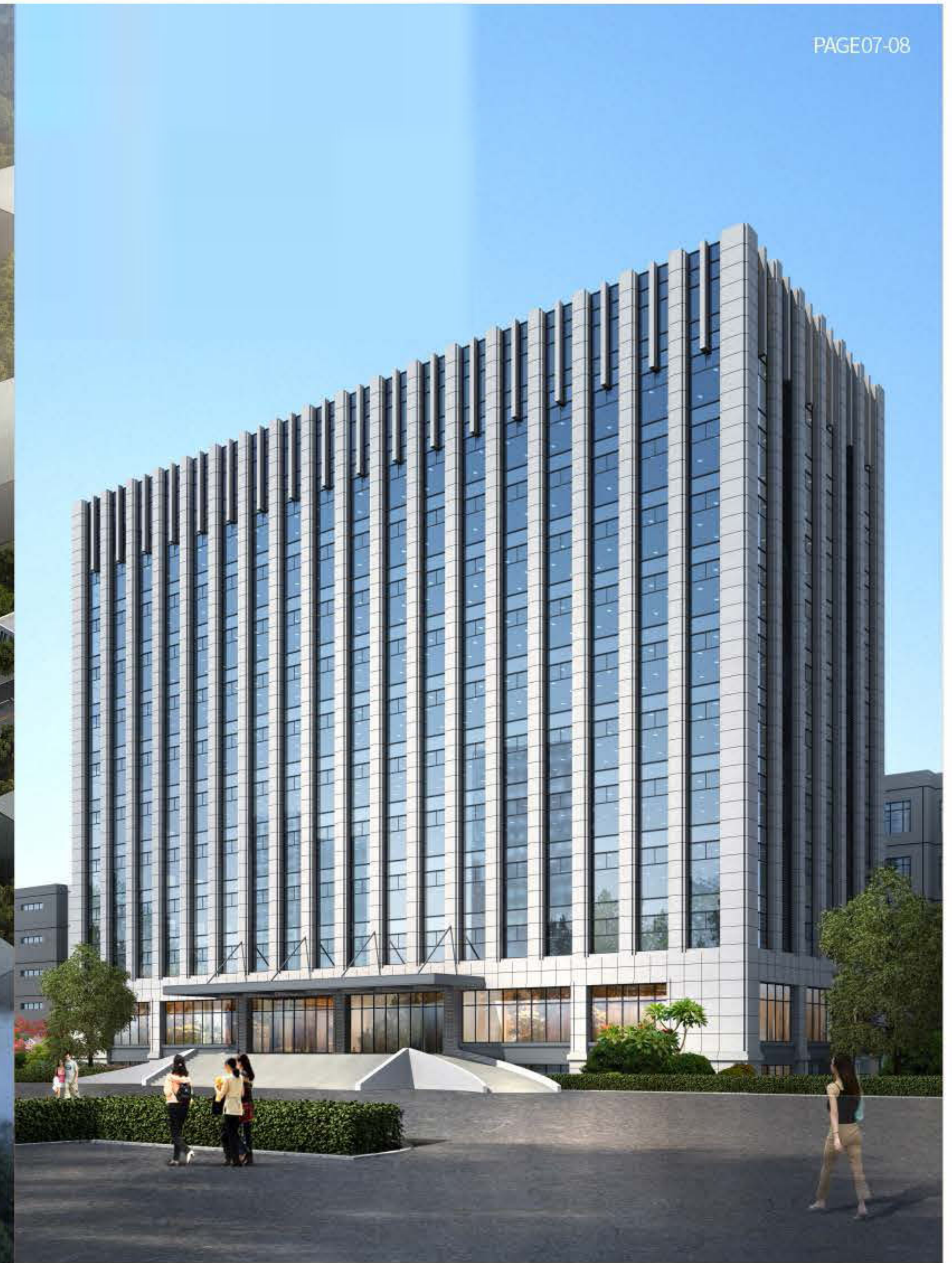


**GLOBAL
PRESENCE**

EMEA	North America	APAC	LATAM
Germany	The United States	China	Mexico
Italy	Canada	India	Brazil
UK		Australia	
Greece		South Korea	

BORDEN SUNTCN CAPACITY

Aerial View Of The Base



Production
Capacity

4

4 modern production lines

2

2 plants (Hangzhou & Ningbo)

3ha

3 Hectares of Land

3GW

3 GW Production Capacity

40%

40% Automation



BORDEN SUNTCN

BORDEN SUNTCN



BORDEN SUNTCN

WORLD-CLASS COMPONENTS SUPPLIERS

To guarantee the high caliber of its solar inverters,
Suntcn selects top-tier suppliers.

Borden Suntcn

Sustain the Earth Beyond the Sun

Panasonic

TDK

**NIPPON
CHEMI-CON**

**ALPHA & OMEGA
SEMICONDUCTOR**

infineon

ON
ON Semiconductor®

TOSHIBA

FAIRCHILD
MICROELECTRONICS

NMB

**TEXAS
INSTRUMENTS**

HF
HONGFA

VAC
VACUUMSCHMELZE

02 SOLUTIONS

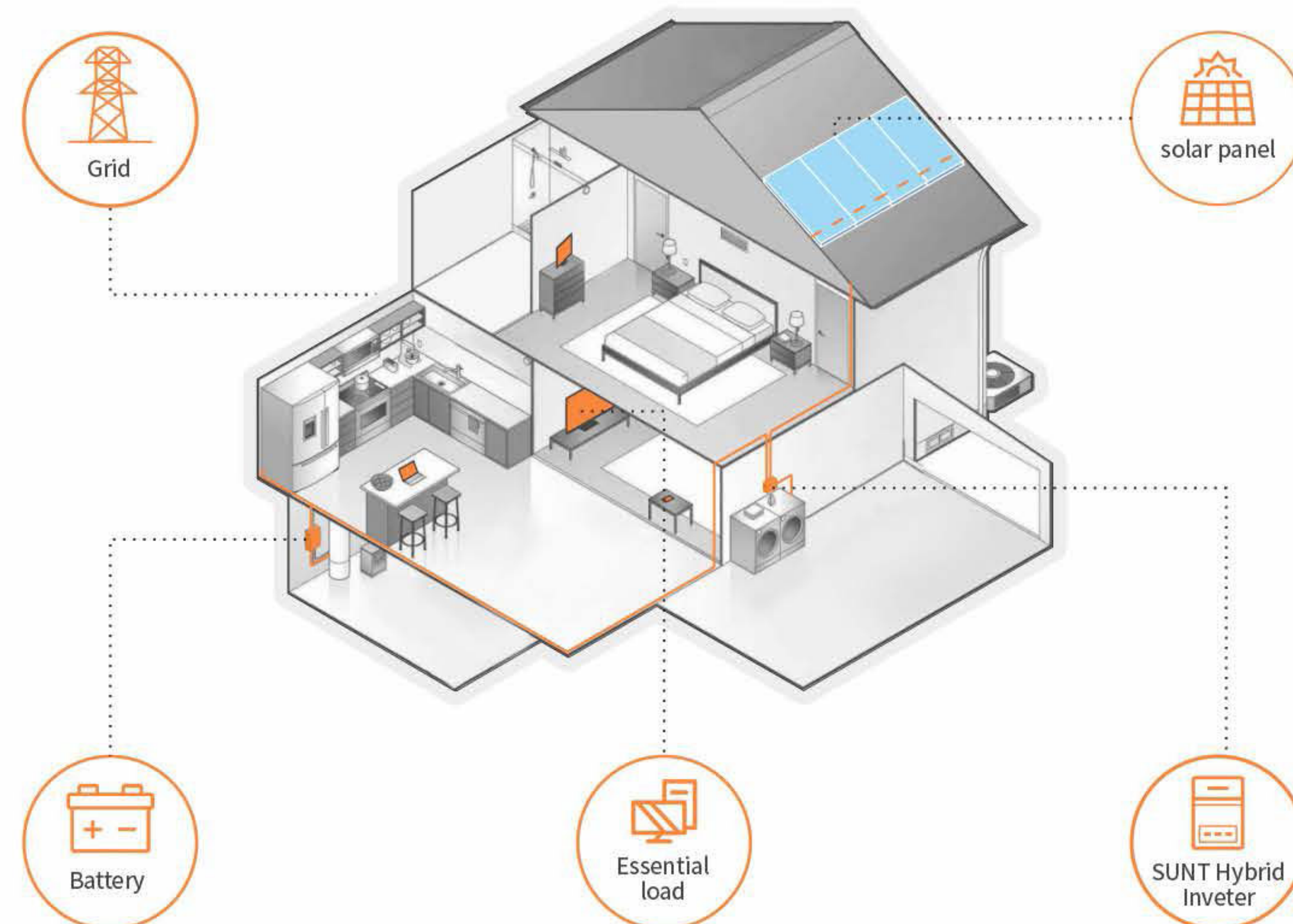
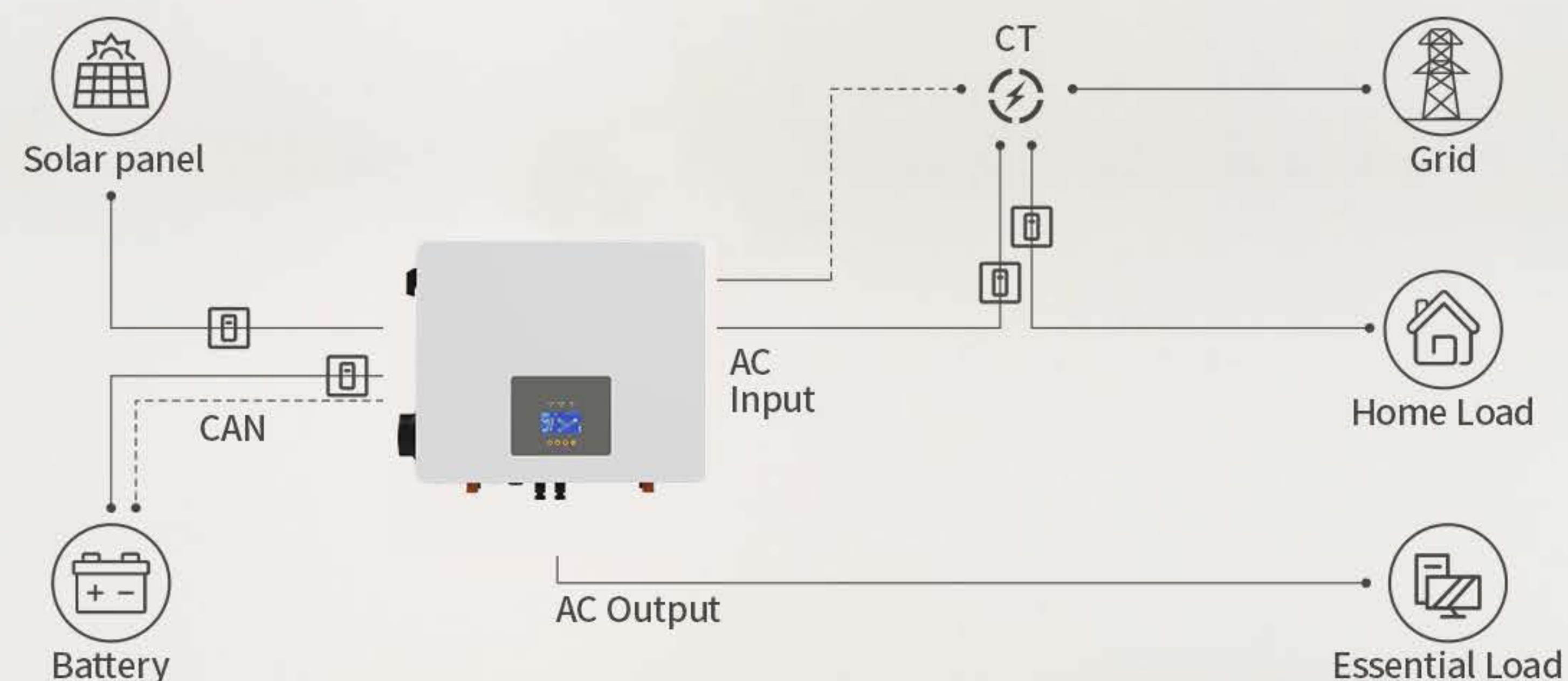
—
The beauty of electricity or of any other force is not that the power is mysterious, and unexpected, touching every sense at unawares in turn, but that it is under law, and that the taught intellect can even now govern it largely.”

by Michael Faraday

HYBRID STORAGE SOLUTIONS

Your one-stop home energy storage system

Circuit Diagram



Efficient DC-Coupled System

- a. Directly charge battery from PV to reduce energy lost
- b. Compensate the home load usage while the Grid is on, and limit the power from backwashing
- c. Capable of working w/ and w/o battery

Off-grid Capable

- a. Provides backup for essential loads during grid failure
- b. Switch to backup power in 4ms without interruption
- c. Compatible with diesel generator

Maximum Versatility

- a. Batteries can be charged from both PV and the grid
- b. PV can simultaneously charge the battery and power essential, loads
- c. The grid can bypass the inverter to power essential load

Full Customization

- a. Multiple Working Modes can be adjusted up to 4 time periods for battery charge and discharge for peak shaving and ladder prices.

WIND POWER SOLUTION

Also apply to Hydro Power

Stackable

Full Customization

Quick switch

Stackable

Inverter Connection Option: connect numerous inverters to reach desired power.

**Quick switch
between different AC voltage**

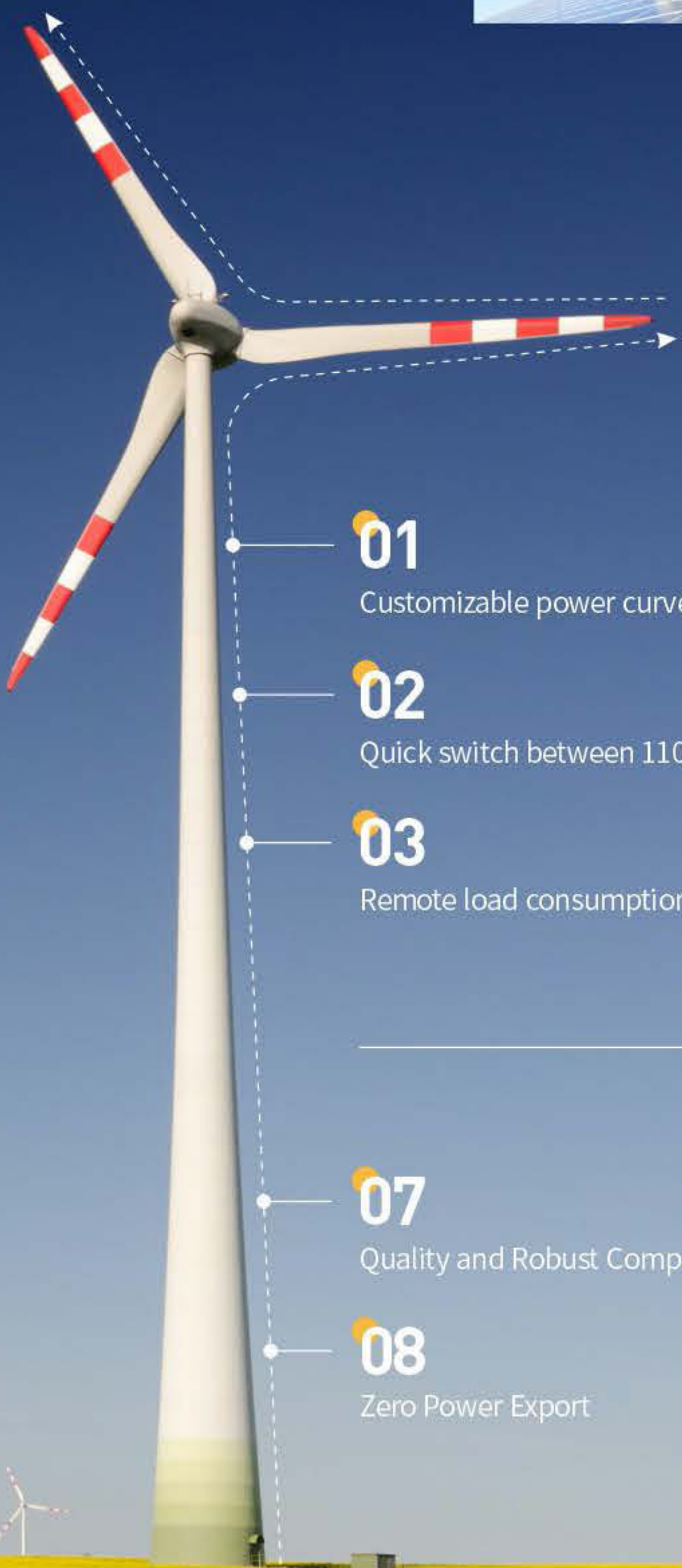
All Voltage Compatible: easy switch between 110V and 230V for different voltage standards.

Full Customization

Maximum Flexibility for Power Adjustment: set the optimal current value based on the inverter's voltage to reach maximum power.



Wind power generation



01

Customizable power curve adjustments

02

Quick switch between 110V & 230V

03

Remote load consumption monitoring

07

Quality and Robust Component

08

Zero Power Export

04

Competitive energy density

05

Net Weight as low as 4.5kg

06

Compact and Efficient

09

Stackable for AC Output



SMART MONITORING SYSTEM

Your one-stop home energy storage system

The power of sun at your fingertips.



- 01

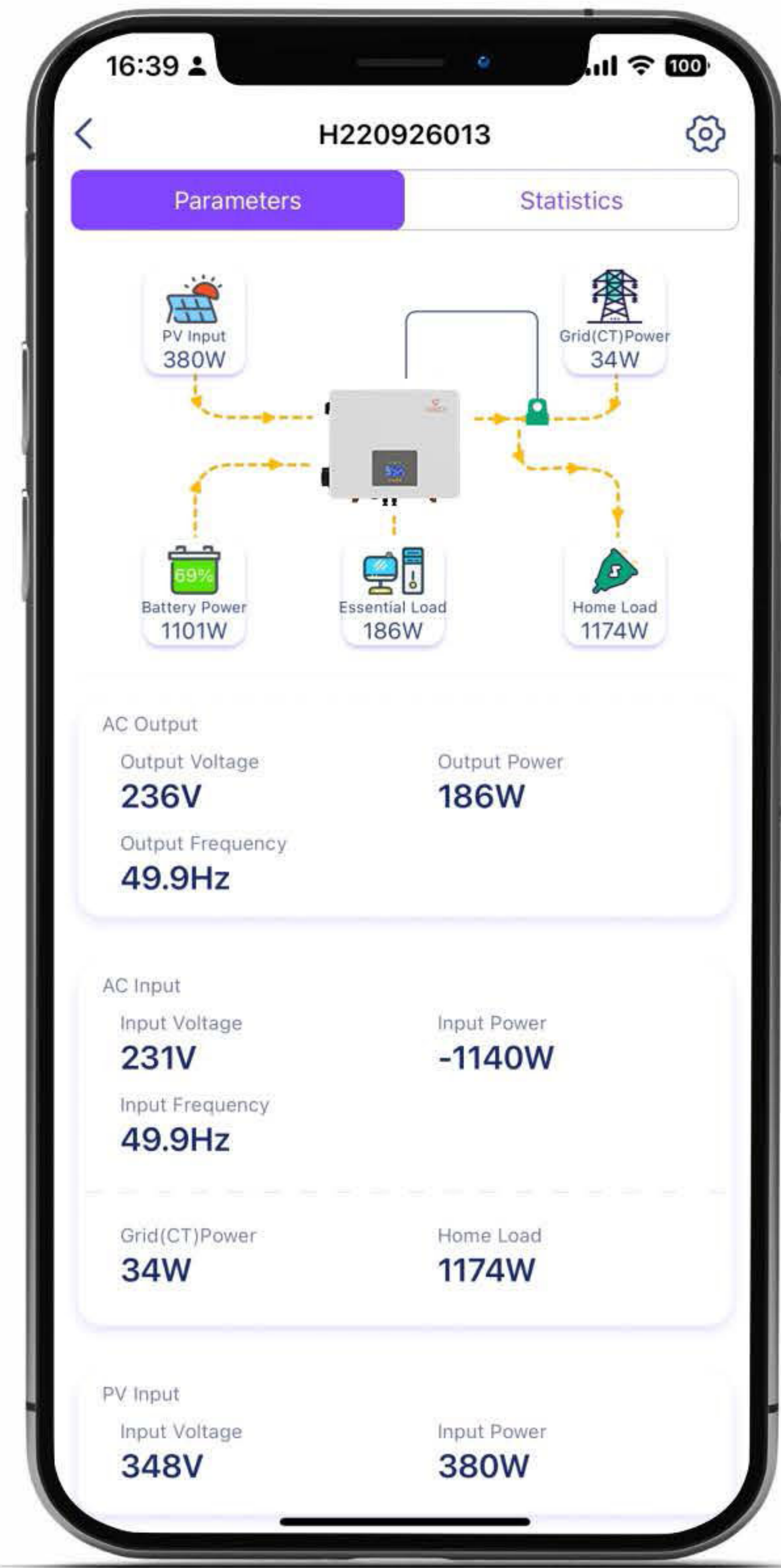
ALL IN ONE - Make, use, save, and sell* your own power right from the palm of your hand.
- 02

Monitor home energy system performance in real-time by our new generation monitoring, app Light Earth.

Smart Monitoring System



BORDEN SUNTCN



03

LUMENTREE INVERTER SERIES AND DATA SHEETS

—
The most beautiful experience we can have is the mysterious. It is the
fundamental emotion that stands at the cradle of true art and true science.

CORE TECHNOLOGY

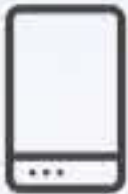
Specially Designed for EU Market

UPS

UPS 4ms Industry-Leading Switchover Time



50% DC Input
Oversizing



Max Efficiency up to
97.6%



MPPT Voltage Range
from 120-450V



Competitive Energy
Density-Small Dimension,
Higher Power



High Voltage High Current up to 120A



Optional Zero Export;
advanced module that blocks power
exporting to the grid as you need



Special cable design and
fully compatible
with complex rooftop

4ms

UPS 4ms industry-leading
Switchover Time

97.6%

Max Efficiency up to 97.6%

120A

High Voltage High
Current up to 120A

EUCA SERIES — HYBRID INVERTER



- 01 UPS 4ms industry-leading Switchover Time
- 02 High Voltage High Current up to 120A
- 03 Max Efficiency up to 97.6%
- 04 Competitive Energy Density-Smaller Dimension, Higher Power
- 05 Special Cable Design And Fully Compatible with Complex Rooftop
- 06 MPPT Voltage Range from 120-450V

BORDEN SUNTCN

	EUCA-3.6KW-H	EUCA-5.5KW-H
Battery Input Parameters		
Supported battery type	Li-Ion or Lead-acid	
Battery input voltage range(V)	40~60	
Max. charge voltage (V)	≤60 (Configurable)	
Max. charge current (A)	60 (Configurable)	90 (Configurable)
Max. discharge current (A)	80 (Configurable)	120 (Configurable)
Battery capacity (Ah)(Recommend)	70~1000	100~1500
Charge for Li-Ion battery pack	Communicating with BMS of the battery pack	
PV String Input Parameters		
Max. DC input power (W)	4500	6800
Max. DC input voltage (V)	500	
MPPT voltage range (V)	120~450	
Start-up voltage (V)	150	
Max. input current (A)	12	15
AC Output Parameters (Back-Up) Feed to essential load		
Max. output power (W)	3600	5500
Max. output apparent power (VA)	3600	5500
Peak output apparent power (VA)	7200	11000
Max. output current (A)	16	24
Nominal output frequency/voltage	50/60(+/-0.2%)Hz; 220/230/240 (Configurable) single phase	
Max. Bypass Current(A)	40	
Shift Time(Bypass and inverter) (ms)	10	
Output THD (Resistor load)	<3%	
AC input parameters (On-grid) Bypass to essential load/ Charge the battery/ Feed to home load		
Max. input power (W)		
Bypass to essential load/Charge the battery	3600	5500
Max.output power (W)		
Feed to home load	3600	5500
Max. apparent input power (VA)		
Bypass to essential load/Charge the battery	3600	5500
Max. apparent output power (VA)		
Feed to home load	3600	5500
Nominal input/output voltage (V)	220/230/240(Auto adjusted to fit home gird) single phase	
Nominal input/output frequency (Hz)	50/60(Auto adjusted to fit home gird)	
Max. bypass current(A)	40	
Shift time(Bypass and inverter) (ms)	10	
Efficiency		
Max. Efficiency	97.6%	
Max. Battery to Load Efficiency	94.0%	
Europe Efficiency	97.0%	
MPPT Efficiency	99.9%	
Protection		
Integrated	Battery over charge protection, Battery low voltage protection, Over temperature protection, Output over load protection, Output short circuit protection, Output over voltage protection	
Certifications & Standards		
Grid regulation	VDE-AR-N4105, UNE217001,G100	
Safety EMC/ Regulation	IEC/EN61000-6-1/3; IEC/EN62109-1/2	

SUNT SERIES — SOLAR POWER GRID-TIE INVERTER

Model	SUNT-600G2-M	SUNT-600G2-H	SUNT-1000G2-M	SUNT-1000G2-H	SUNT-2000G2-H	SUNT-2000G2-T
Rated Power(Max./Continuous)	600W/600W	600W/600W	1000W/1000W	1000W/1000W	2000W/2000W	2000W/2000W
	SUNT-XXXG2-M	SUNT-XXXG2-H	SUNT-XXXG2-M	SUNT-XXXG2-H		SUNT-XXXG2-T
Maximum Input DC Voltage	65 V	90 V	65V	90V		110V
MPPT Voltage Range	25V-60V	25V-60V	25V-60V	50V-85V		70V-100V
Operating DC Voltage Range	22V-65V	22V-65V	22V-65V	45V-90V		60V-110V
	SUNT-600G2-X		SUNT-1000G2-X		SUNT-2000G2-X	
Nominal Voltage (Range)	110V(95-140V)/230V(185-265V)		110V(95-140V)/230V(185-265V)		230V(185-265V)	
Frequency (Range)	50Hz(45-55Hz)/60Hz(56-64Hz)					
Power Factor	>0.95					
Output Waveform	Pure Sine Wave					
MPPT Efficiency	99%					
Over Current Protection Over	Yes					
Temperature Protection	Yes					
Reverse Polarity Protection	No					
Anit-Island Protection	Yes Just for					
Stackable	AC Output					
Operating Temperature Range	-20°C~45°C					
Storage Temperature Range	-40°C~65°C					
	SUNT-600G2		SUNT-1000G2		SUNT-2000G2	
Net Weight	3.0kg		4.0Kg		5.8Kg	
Gross Weight	4.0kg		5.0Kg		7.0Kg	
Dimesion(Package)	333mm*310mm*155mm		430mmx310mmx155mm		540mmx310mmx155mm	



BORDEN SUNTCN

TURBO SERIES — WIND POWER & WATER ENERGY INVERTER



BORDEN SUNTCN

Model	TURBO-1000G2-WDL-M	TURBO-1000G2-WAL-M	TURBO-1000G2-WDL-H	TURBO-1000G2-WAL-H	TURBO-2000G2-WDL-H	TURBO-2000G2-WAL-H
INPUT DATA (DC)	TURBO-XXXG2-M		TURBO-XXXG2-H			
Rated Power(Max./Continuous)	1000W/1000W	1000W/1000W	1000W/1000W	1000W/1000W	2000W/2000W	2000W/2000W
Max Input DC Voltage (V)	65		90			
Peak power Tracking Voltage (V)	25-60		50-90			
Operating DC Voltage Range (V)	22-65		45-90			
Peak Inverter Efficiency (V)	22-60		45-90			
OUTPUT DATA (AC)	TURBO-1000G2-X				TURBO-2000G2-X	
Nominal Voltage /Range	110V(95-140V)/230V(185-265V)				230V(185-265V)	
Frequency Range	50Hz(45-55Hz)/60Hz(56-64Hz)					
Power Factor	>0.95					
Output Waveform	Pure Sine Wave					
Power Curve Adjustable	Yes					
Over Current Protection Over	Yes					
Temperature Protection	Yes					
Reverse Polarity Protection	No					
Anit-Island Protection	Yes					
Stackable	Just for AC Output					
Operating Temperature Range	-20°C~45°C					
Storage Temperature Range	-40°C~65°C					
Model	TURBO-1000G2-X-X				TURBO-2000G2-X-X	
Gross Weight	4.5Kg				6.2Kg	
Net Weight	5.5Kg				7.5Kg	
Dimension (Package)	430mmx310mmx155mm				540mmx310mmx155mm	